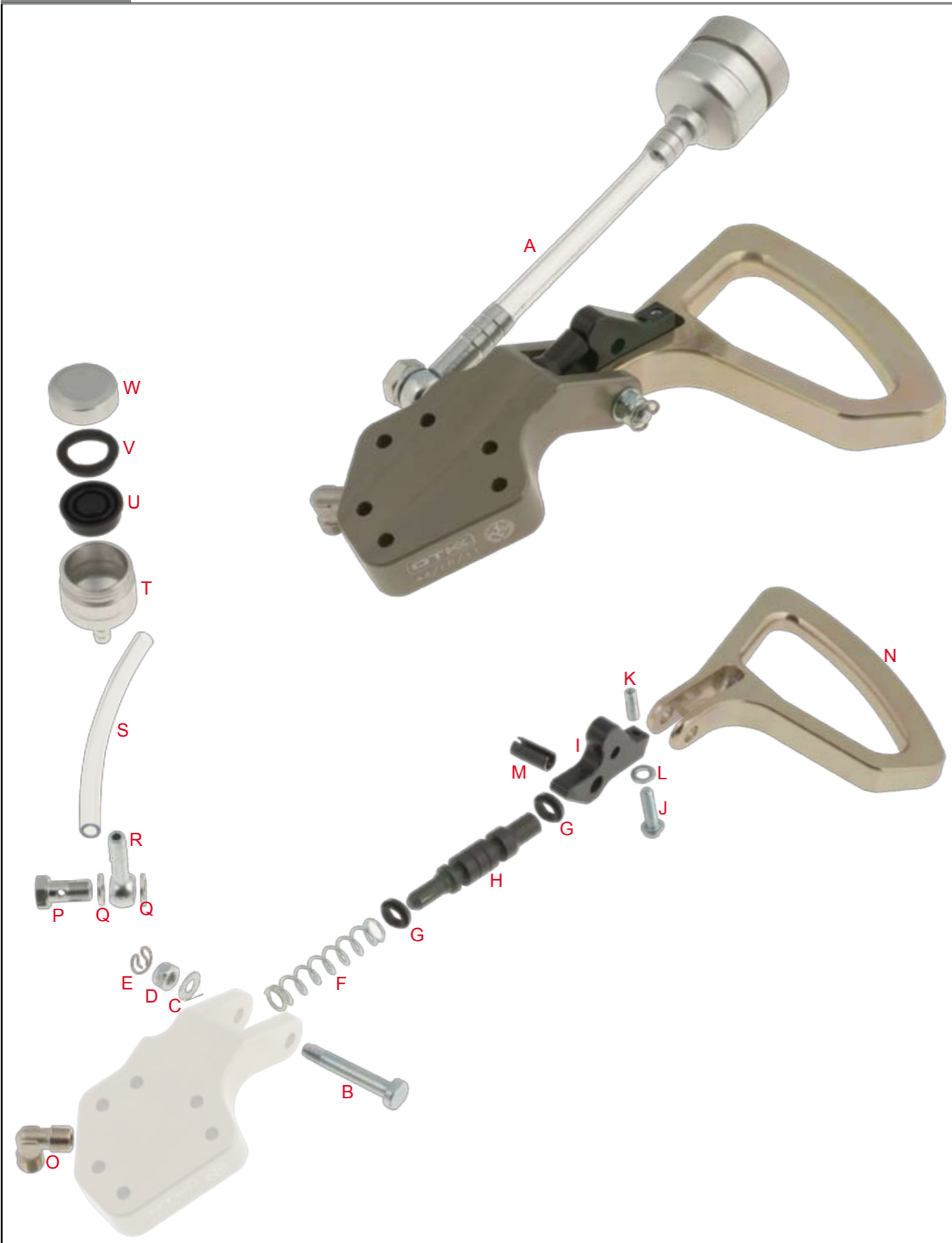


Tav. 31 POMPA FRENO ANTERIORE • FRONT BRAKE PUMP BS7



Tav.	Rif.	Cod.	Descrizione	Description	N°
		OF101080B1	POMPA FRENO ANTERIORE BS7	BS7 FRONT BRAKE PUMP	
31	A	0029.FA	Pompa freno anteriore BS7 completa	Complete BS7 front brake pump	
31	B	0029.F7	Perno leva pompa freno anteriore BS7	Pin for BS7 brake pump's lever	
31	C	R.P.6X11	Rondella Ø 6,4 x 11 x 1,5 mm	Washer Ø 6,4 x 11 x 1,5 mm	10 pcs
31	D	D.M6A.B.	Dado M6 A.B.	A.B. nut M6	10 pcs
31	E	0116.B8	Molla ad anello perni pinza	Circle spring for caliper's pin	
31	F	0029.F13	Molla pompa freno anteriore BS7	BS7 brake pump's spring	
31	G	0029.A9	Guarnizione pompa Ø 13 - 8 mm	Brake pump's lining Ø 13 - 8 mm	
31	H	0029.F10A	Pistoncino pompa freno anteriore BS7	BS7 brake pump's piston	
31	I	0029.F5	Spingi pistoncino pompa freno anteriore BS7	Piston's pusher for BS7 brake pump	
31	J	V.TB5X20	Vite TB 5 x 20	TB screw 5 x 20	10 pcs
31	K	G.5X16	Grano M5 x 16 punta piana	Lock M5 x 16 flat tip	10 pcs
31	L	R.P.5X11	Rondella Ø 5 x 11 x 1 mm	Washer Ø 5 x 11 x 1 mm	10 pcs
31	M	0029.F8	Spina elastica Ø 8 x 18 mm	Flexible pin Ø 8 x 18 mm	
31	N	0029.F6	Leva pompa freno anteriore BS7	BS7 brake pump's lever	
31	O	0079.A1	Raccordo a "L" tubo freno	Brake pipe's "L type" connector	
31	P	0081.B3B	Vite forata per inserto ad occhio	Drilled screw for banjo fitting	
31	Q	0081.B3C	Rondella AL	AL washer	10 pcs
31	R	0081.B3D	Inserto ad occhio Ø 10 mm	Banjo fitting Ø 10 mm	
31	S	0074.C0	Tubo benzina Ø 6 x 9 mm	Fuel pipe Ø 6 x 9 mm	mt
31	T	0029.F10	Serbatoio pompa freno anteriore BS7	BS7 front brake pump's tank	
31	U	0029.D15	Guarnizione serbatoio pompa freno	Brake pump tank's lining	
31	V	0029.D16	Rondella guarnizione serbatoio pompa freno	Brake pump tank's washer	
31	W	0029.D6A	Tappo serbatoio pompa freno	Brake pump tank's cap	